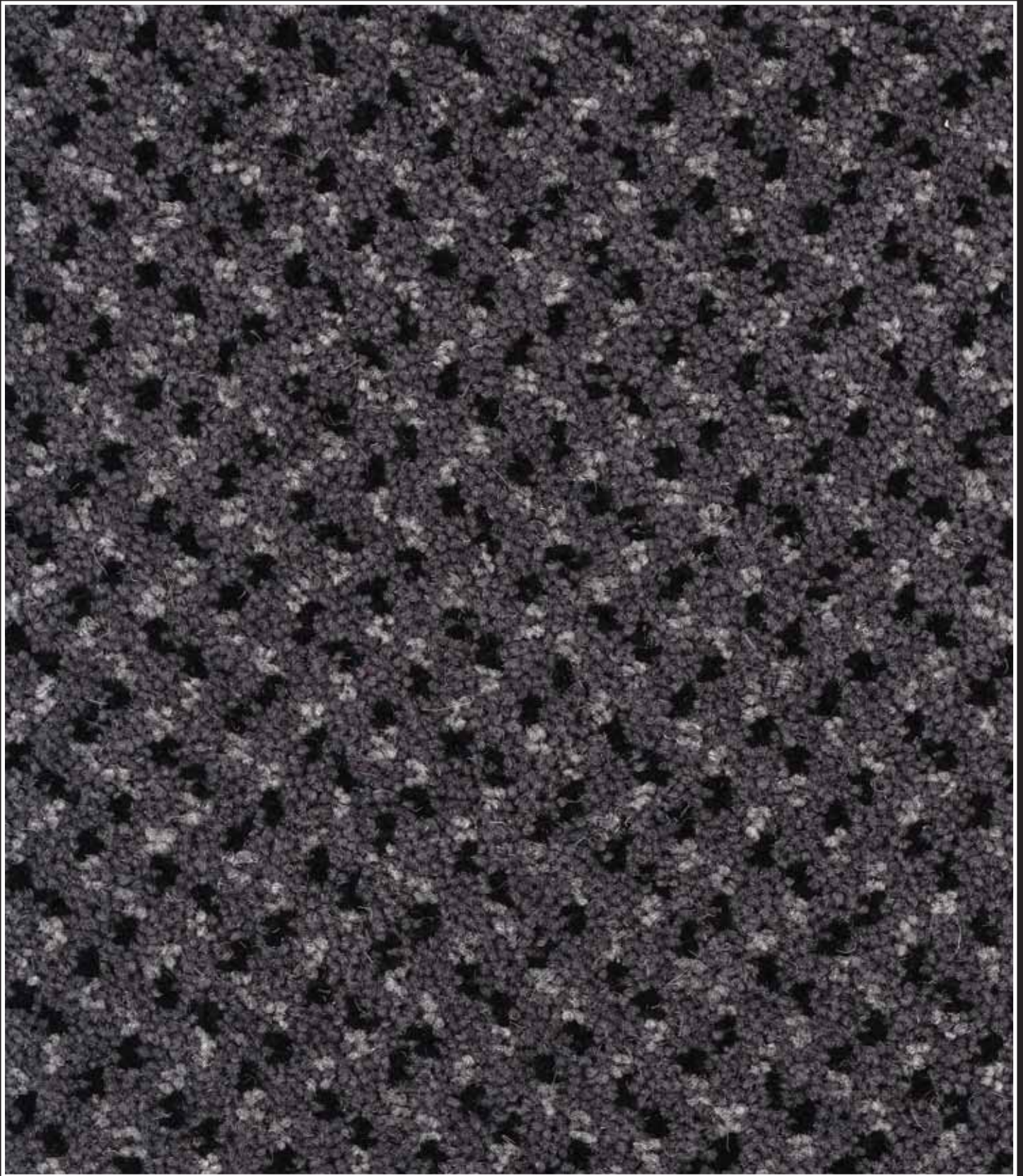




# *Menuet Design*

*Any 3 Colours from the 136 Twist Colours  
in 3.66m, 4m, 4.57m and 5m rolls only*



MENUET - BASE COLOUR - GRANITE, BLACK & EBONY

*Available in any 3 standard colours*

# SPECIFICATION GUIDE

<b>Quality Type</b>	<b>Menuet Design</b>	<b>Flammability BS4790 Hot Nut Test</b>	Low Radius of Char
<b>Suitability</b>	Extra Heavy Duty Residential	<b>Light Fastness BS1006</b>	Min 4 to 5
<b>Woolmarks Testex Accreditation</b>	Heavy Duty Contract	<b>Rubbing Fastness BS1006</b>	4 Wet 3 Dry
<b>Widths</b>	3.66m, 4m, 4.57m, & 5m	<b>Colour Fastness BS1006 % Shampoo</b>	4
<b>Composition</b>	80/20 Wool Nylon 2 Fold Yarn	<b>Castor Chair Rating DIN54324</b>	Pass
<b>Tufted Construction</b>	1/8th Gauge	<b>Dimensional Stability ISO 2551</b>	Pass
<b>Primary Backing</b>	Polypropylene	<b>Surface Flammability Ceilings, bulkhead &amp; deck IMO 653(16)</b>	Pass
<b>Secondary Backing</b>	Jute	<b>Product Code</b>	C
		<b>A roll consists of 80m<sup>2</sup> per width</b>	

## ANY COLOUR COMBINATION

Create your own combination by selecting any 3 colours from the 136 colourways within the Ultima Twist Range. Please note the colours shown depict

the current range and are as accurate as the printing process will permit. Actual colour swatch samples are available upon request.

## FEATURES & BENEFITS

- Four widths available (3.66m (12ft), 4m, 4.5m (15ft) & 5m)
- All widths an exact colour match
- All manufacturing processes carried out exclusively in the UK
- Made from fine 2 fold yarn to prevent pile reversal and provide enhanced wearability
- Softer backing - Easy Care
- Suitable for all domestic and most contract areas
- All makes of vacuum cleaner can be used
- Treated to prevent moths & dustmites
- Guardsman keeps your carpet looking newer for longer
- Superior quality, resilience and durability

## CLEANING GUIDE

The appearance retention and durability of carpet is governed by the care and attention it receives during its lifetime. The importance of a regular cleaning or maintenance schedule cannot be over emphasised

- 1) Weekly cleaning with a vacuum cleaner or carpet sweeper
- 2) Annually an expert clean is recommended

For small spills ring the Guardsman help line explaining that it is a Westex Carpet. They will provide free advice on the type of spill and the best method of cleaning.

**WATER BASED STAINS** (including ketchup, soft drinks, wine and alcoholic beverages)

Use a good proprietary brand of carpet shampoo. Follow the manufacturers directions and do not exceed the recommended dilution rates.

**OIL BASED STAINS** (including salad dressing, butter and greasy foods)

These should be removed with a spot remover containing a dry cleaning fluid.

**GUARDSMAN  
HELPLINE:**

**0800 585693**

## HEALTH & SAFETY

### Risk Assessment

The main risk associated with carpet is the physical handling.

Correct handling methods and/or equipment needs to be used taking into account weight, size and location.

### Protective Treatments

All the treatments and raw materials in Westex carpets are proven safe within the normal use of carpet.

### Fire Certification

All Westex carpets have passed both the IMO 653(16) Surface Flammability Test and the BS4790 Hot Nut Test.

### Environmental

All process used in the manufacture of Westex carpets comply with all relevant environmental requirements and legislation. Waste is reduced/recycled where possible or disposed of through licensed handlers.

## INSTALLATION

Prior to installation subfloors should be smooth, clean, level and dry.

### Contract Locations:

Westex recommend that the carpet is fully adhered to the subfloor using the chosen adhesive manufacturers recommended product, either trowel applied or spray system.

Alternatively carpets may be installed on a contract underlay system using a tackifier adhesive to the subfloor and full adhesion of the carpet to the contract underlay. For further information refer to Westex or the adhesive/underlay manufacturer.

All seams to be sealed.

### Residential Locations:

As above or using the traditional gripper and underlay method.



## Fine 2 Fold Yarn

***The most important factor in carpet quality.***

Each tuft of a Westex carpet has 2 ends of yarn. The doubling of the fine ends of yarn makes for a finer finish

**GIVING SUPERIOR QUALITY, RESILIENCE & DURABILITY AND PREVENTING PILE REVERSAL**